

 ARMANI / CASA



AURORA

Floor Lamp

AURORA

DESCRIPTION

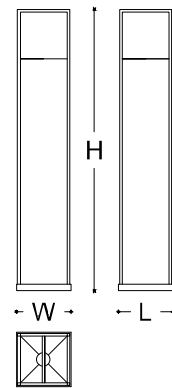
Floor lamp with base and stem in Satin Black Nickel, beige fabric lampshade surrounded by a metal grid.

Like all Armani/Casa lamps, Aurora requires a power supply box (to be bought separately) to work.

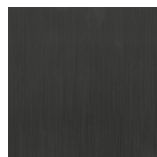
MADE IN ITALY

DIMENSIONS

29 x 29 x 150 h cm - Inch 11.4 x 11.4 x 59 h



FINISHES



Satin Black Nickel

AURORA

TECHNICAL INFORMATION

Base and Stem

MDF panel inside, finished with satinated black nickel iron.

Lamp shade

Interwoven wood fibers over parchment sheets.

Finishing and painting cycle

Metal treated with nitre elettrostatic solvent.

Lighting system

LED.

Power supply box

Input: 100-240V ~ 0.7A, 50-60HZ

For indoor use only.

Maintenance and disposal

Product designed for indoor use. Make sure that the surface does not stay in contact with water or other liquids, even for short periods. The product is made with finishes subject to deterioration if treated with unsuitable substances. Always use neutral and creamy cleaning solutions without alcohol or acids. Never use steel wool or abrasive sponges but a soft wet cloth. Dry thoroughly after each cleaning. The replacement of damaged parts must be done only with original pieces: in this case, please contact an official Armani/Casa dealer for assistance. At the end of its useful life, the product must be returned to an authorized collection center for disposal.