

ARMANI / CASA



PORTER

Bedside table

PORTER

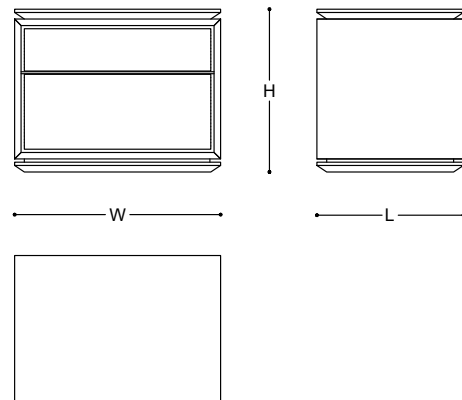
DESCRIPTION

Porter is a range of different pieces conceived to complete the living/dining area and the bedroom. All pieces feature some details studied to make the structure look lighter, like the empty spaces in between the doors/drawers and the one that separates the frame from the central part. Porter is available in two versions: the first is in Black Lacquer with drawers front in Rose Silver Leaf, while the second is in Platinum Lacquer with drawers front in Thermo-Treated Paulownia. The latter presents comb joints on the drawers, a particular structural detail left visible to become a decoration as well. Inside, drawers of the first versions are in matt black lacquer, while the second has tone-on-tone drawers. All drawers feature a push-pull opening mechanism.

MADE IN ITALY

DIMENSIONS

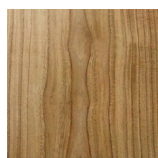
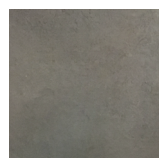
63 x 45 x 50 h cm - Inch 70.8 x 17.7 x 19.7 h



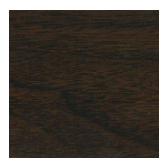
FINISHES



Black Lacquer /
Rose Silver Leaf



Platinum Lacquer /
Thermo-Treated Paulownia



Canaletto Walnut

PORTER

TECHNICAL INFORMATION

Structure

MDF finished with lacquer.

Inner Structure

HPL finished with lacquer.

Drawers

MDF panel covered in silver leaf or veneered with wood (*Paulownia tormentosa*, *Juglans nigra*).

Painting cycle / Glues:

Solvent or water dye, polyurethane base, solvent shading / Vynil and urea glues.

Maintenance and disposal

Product designed for indoor use. Make sure that the surface does not stay in contact with water or other liquids, even for short periods. The product is made with finishes subject to deterioration if treated with unsuitable substances. Always use neutral and creamy cleaning solutions without alcohol or acids. Never use steel wool or abrasive sponges but a soft wet cloth. Dry thoroughly after each cleaning. The replacement of damaged parts must be done only with original pieces: in this case, please contact an official Armani/Casa dealer for assistance. At the end of its useful life, the product must be returned to an authorized collection center for disposal.