

ARMANI / CASA



NEXT

Table lamp

NEXT

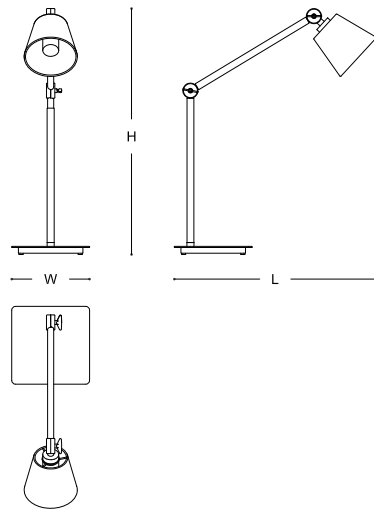
DESCRIPTION

Reading table lamp with brass structure and rectangular flat base in steel. The stem is divided in two leather-covered segments that, together with the upper part, grant the best possible orientation of the lamp. A decorative truncated cone shade in colored fabric, matching the leather, envelops the light source. Switch/dimmer in the shape of GA logo on the base. Like all Armani/Casa lamps, Next requires a power supply box (to be bought separately) to work.

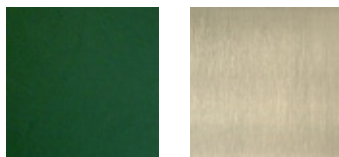
MADE IN ITALY

DIMENSIONS

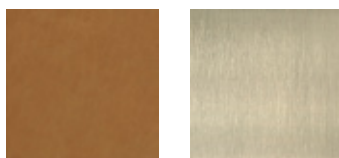
20x57x58h cm - Inch 7.8x22.4x22.8h



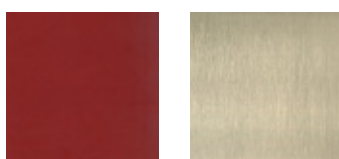
FINISHES



Dark Green Thin Leather /
Satin Light Brass



Natural Thin Leather /
Satin Light Brass



Red Thin Leather /
Satin Light Brass

TECHNICAL INFORMATION

Power supply box input: 100-240V ~ 0.7A, 50-60HZ

For indoor use only.

Shade

Fabric (65% Polyester - 35% Cotton) coupled with PVC.

Structure

Steel with galvanici treatment.

Finishing and painting cycle / Glues

Metal: treatment with nitre solvent / Cow leather / Vinyl and urea glues.

Maintenance and disposal

Product designed for indoor use. Make sure that the surface does not stay in contact with water or other liquids, even for short periods. The product is made with finishes subject to deterioration if treated with unsuitable substances. Always use neutral and creamy cleaning solutions without alcohol or acids. Never use steel wool or abrasive sponges but a soft wet cloth. Dry thoroughly after each cleaning. The replacement of damaged parts must be done only with original pieces: in this case, please contact an official Armani/Casa dealer for assistance. At the end of its useful life, the product must be returned to an authorized collection center for disposal.

