

ARMANI / CASA



ONYX

Bookcase

ONYX

DESCRIPTION

Onyx is a fixed bookcase that reinterprets the shape of the Matrix and the Nathan ranges (dining tables, consoles, small tables) introduced in the last years: the metal structure features the same extra thin look (1 cm - Inch 0.4) and the iconic triangular section, which creates particular reflections. The top part of the shelves and the sides present the same material, contrasting with the structure always in Satin Light Brass. Available in different sizes (57, 95 and 180 cm of height) and materials to match the Matrix range.

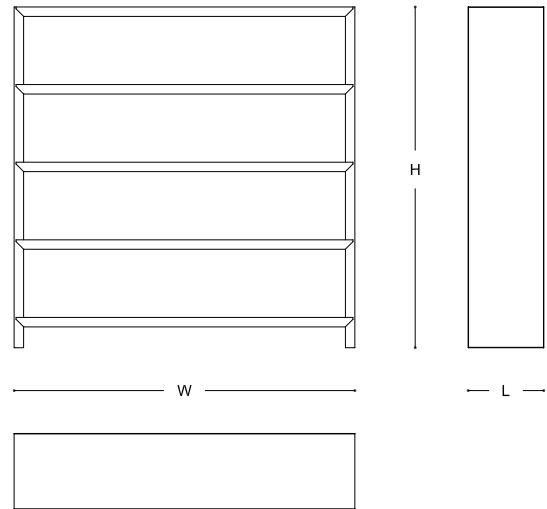
MADE IN ITALY

DIMENSIONS

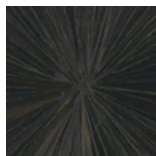
180x40x57h cm - Inch 70.8x15.7x22.4h

180x40x95h cm - Inch 70.8x15.7x38.5h

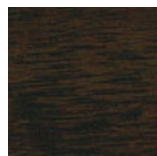
180x40x180h cm - Inch 70.8x15.7x70.8h



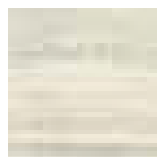
FINISHES



Black Straw Marquetry /
Black Beech Wood /
Satin Light Brass



Canaletto Walnut /
Satin Light Brass



Onyx-Textured Metal /
Satin Light Brass

TECHNICAL INFORMATION

Inner structure

Painted aluminium.

Outer structure

Satin-finished steel coated with galvanic treatment.

Outer panels and shelves top

Straw marquetry / beech veneer, walnut veneer (*Juglans nigra*) or printed metal panels, depending on the version.

Finishing and painting cycle / Glues

Metal: treatment with nitre solvent / Vinyl and urea glues.

Maintenance and disposal

Product designed for indoor use. Make sure that the surface does not stay in contact with water or other liquids, even for short periods. The product is made with finishes subject to deterioration if treated with unsuitable substances. Always use neutral and creamy cleaning solutions without alcohol or acids. Never use steel wool or abrasive sponges but a soft wet cloth. Dry thoroughly after each cleaning. The replacement of damaged parts must be done only with original pieces: in this case, please contact an official Armani/Casa dealer for assistance. At the end of its useful life, the product must be returned to an authorized collection center for disposal.