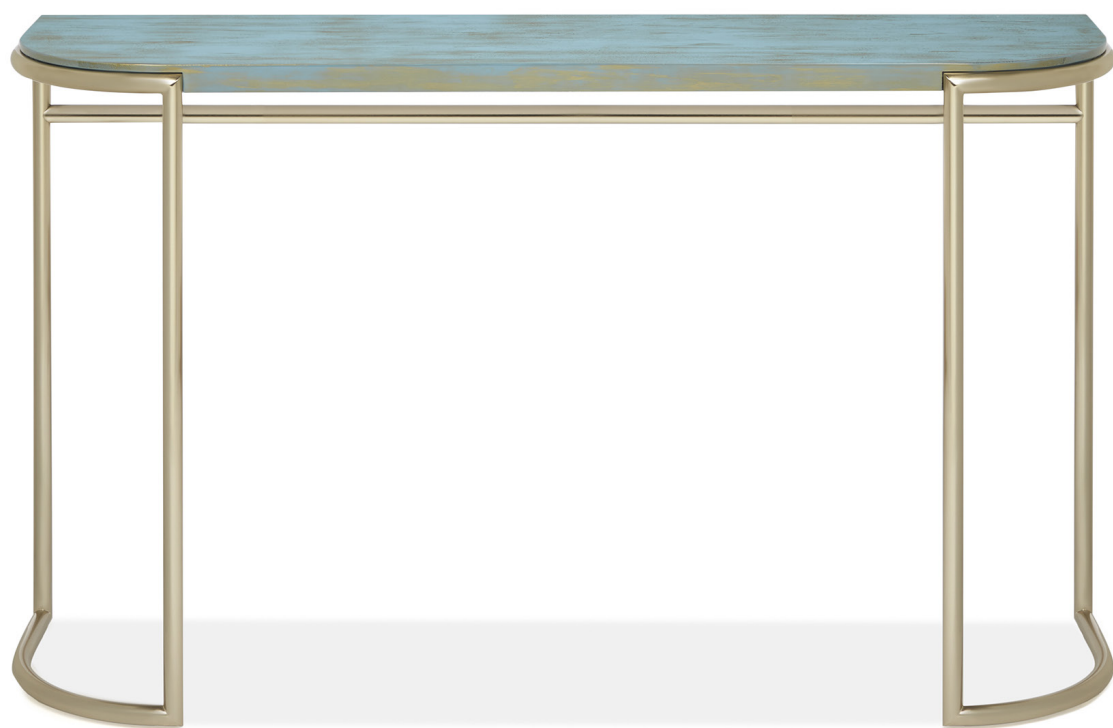


ARMANI / CASA



ORIZZONTE

Console

ORIZZONTE

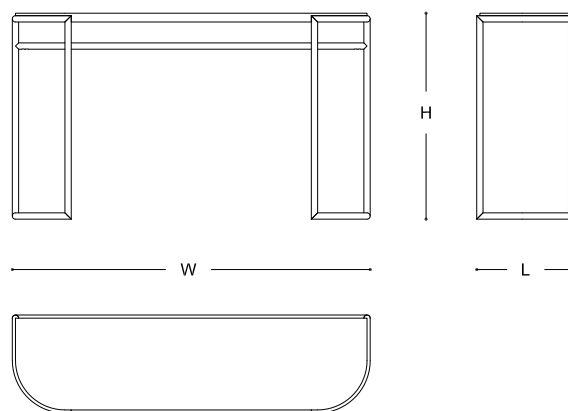
DESCRIPTION

The Orizzonte console stands out for its neat design, marked by the reduced thickness of the top and the legs. The tubular structure - in metal or covered with leather - embraces the top in a very elegant way.

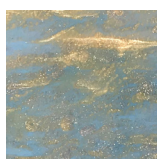
MADE IN ITALY

DIMENSIONS

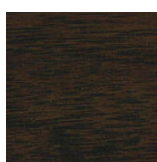
140x40x80h cm - Inch 55.1x15.7x31.4h



FINISHES



Golden Sea Waves Lacquer  
Satin Light Brass



Canaletto Walnut  
Cortecchia Brown Leather

ORIZZONTE

TECHNICAL INFORMATION

Top

MDF panel covered with lacquer or veneered with walnut (*Juglans nigra*).

Legs

Brass with galvanic coating or wrapped with thick Tuscanian leather (cuoio), depending on the version.

Painting cycle

Water dye, polyurethane base.

Metals and glues

Satin-finished metal with galvanic coating and treated with transparent nitre solvent / Vinyl and urea glues.

Maintenance and disposal

Product designed for indoor use. Make sure that the surface does not stay in contact with water or other liquids, even for short periods. The product is made with finishes subject to deterioration if treated with unsuitable substances. Always use neutral and creamy cleaning solutions without alcohol or acids. Never use steel wool or abrasive sponges but a soft wet cloth. Dry thoroughly after each cleaning. The replacement of damaged parts must be done only with original pieces: in this case, please contact an official Armani/Casa dealer for assistance. At the end of its useful life, the product must be returned to an authorized collection center for disposal.





ORIZZONTE Console - Version in Golden Sea Waves Lacquer