

ARMANI / CASA



DALIA

Chair

DALIA

DESCRIPTION

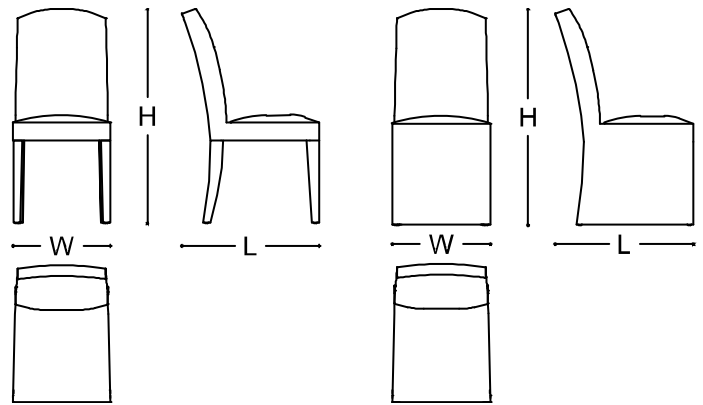
Dalia is a high comfort dining chair with flowing lines, which offers many customizable options. In fact, Dalia is available with or without house, and without house it can be selected with wooden legs or completely upholstered. In the wooden legs option, the seat and the seatback can be upholstered with all Soft Touch Leathers or suitable Armani/Casa fabrics in collection. Thin Leather can be selected only in combination with Canaletto Walnut. The completely upholstered version, instead, features padded legs and Satin Natural Brass feet. In this case, the upholstery can be selected among all Soft Touch Leathers, suitable Armani/Casa fabrics or Technical Shagreen Fabric. A particularly elegant version features Maranello velvet on the seat and decorative Lafayette fabric on the seatback, in matching tones. The insertion of a handle on the reverse of the seatback is an extra optional feature. A protective mini slip cover can be ordered separately.

MADE IN ITALY

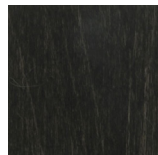
DIMENSIONS

46,2x65,2x102h cm - Inch 18.2x24.6x40.2h

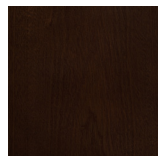
SH: 51 cm - Inch 20.1



FINISHES



Black Maple



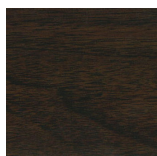
Brown Mahogany



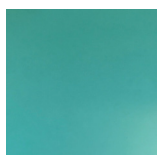
Brushed Brown Oak

DALIA

FINISHES



Canaletto Walnut



Veronese Green Lacquer

TECHNICAL INFORMATION

Seatback / Seat

Inner structure in steel and elastic bands / Padding in polyurethane foam with even density.

Legs / Feet

Legs in solid wood, depending on the finish (*Acer spp.*, *Quercus robur*, *Swietenia mahagoni*, *Juglans nigra*), or in shellac. Metallic feet in brass.

Finishing and painting cycle / Glues

Water dye, polyurethane base, solvent shading / Vinyl and urea glues.

Maintenance and disposal

Product designed for indoor use. Make sure that the surface does not stay in contact with water or other liquids, even for short periods. The product is made with finishes subject to deterioration if treated with unsuitable substances. Always use neutral and creamy cleaning solutions without alcohol or acids. Never use steel wool or abrasive sponges but a soft wet cloth. Dry thoroughly after each cleaning. The replacement of damaged parts must be done only with original pieces: in this case, please contact an official Armani/Casa dealer for assistance. At the end of its useful life, the product must be returned to an authorized collection center for disposal.